

**MVP-METALL, 8XM12, 5POLE, PRE-WIRED CABLE**

5.0m PUR 16x0,34+5x0,75, UL/CSA

8-way, 5-pole, DIAGNOSTIC

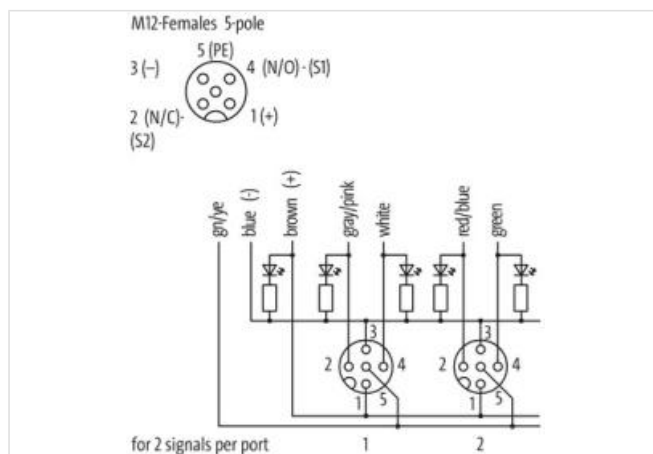
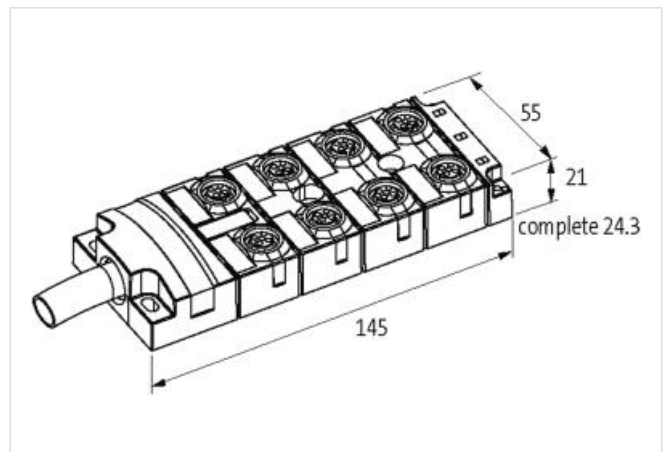
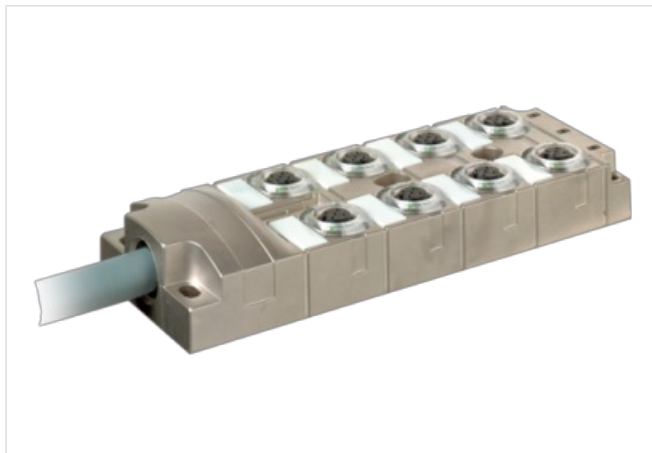
5.0 m

integrated electronic current monitoring with shutoff

electronic diagnostic with ERROR LED

Further cable lengths on request.

All M12 ports are current monitored regarding 0 V total current (contact 3), and are switched off in case of overload or short-circuit (self-resetting). Supply voltage of other ports remains the same. In case of a fault the DIAGNOSTIC signal "active high" to the PLC (wire "brown" 2) drops from 24 V DC to 0 V. The operator can immediately react by analysing the diagnostic signal.

[Link to Product](#)**Illustration**

Product may differ from Image

**Commercial data**

ECLASS-6.0

27279219

The information in this Product-PDF has been compiled with the utmost care.

Liability for the correctness completeness and topicality of the information is restricted to gross negligence. Version: 2024-05-07

Murrelektronik Ltd. | 5 Albion Street, Pendlebury Industrial Estate, Swinton | Manchester M27 4FG | Fon +44 161 728 3133 | Fax +44 161 728 3130 | shop@murrelektronik.co.uk | shop.murrelektronik.co.uk

|                       |               |
|-----------------------|---------------|
| ECLASS-6.1            | 27279219      |
| ECLASS-7.0            | 27279219      |
| ECLASS-8.0            | 27279219      |
| ECLASS-9.0            | 27440108      |
| ECLASS-10.1           | 27440108      |
| ECLASS-11.1           | 27440108      |
| ECLASS-12.0           | 27440108      |
| ETIM-5.0              | EC002585      |
| customs tariff number | 85444290      |
| GTIN                  | 4048879063746 |
| Packaging unit        | 1             |

#### Electrical data | Supply

|                          |       |
|--------------------------|-------|
| Operating voltage DC     | 24 V  |
| Current consumption max. | 35 mA |
| Total current max.       | 10 A  |

#### Electrical data | Input

|   |       |
|---|-------|
| Current input full equipment min.       | 10 A  |
| Current carrying capacity per port max. | 0,5 A |

#### Electrical data | Output

|                                |             |
|--------------------------------|-------------|
| Diagnostic output              | active high |
| Current diagnostic output max. | 25 mA       |

#### Diagnostics

|                       |            |
|-----------------------|------------|
| Status indication LED | green, red |
|-----------------------|------------|

#### Installation | Connection

|              |         |
|--------------|---------|
| Mounting set | M12 x 1 |
|--------------|---------|

#### Device protection | Electrical

|  |                   |
|--|-------------------|
| Degree of protection (EN IEC 60529)    | IP65, IP67, IP68  |
| Additional condition protection degree | inserted, screwed |
| Overload resistant                     | yes               |
| Short-circuit protected                | yes               |
| Short circuit current min.             | 0,7 A             |
| Short circuit current max.             | 0,9 A             |
| Overload current min.                  | 0,7 A             |
| Overload current max.                  | 0,9 A             |

#### Mechanical data | Material data

|                  |                  |
|------------------|------------------|
| Coating housing  | Nickel           |
| Material housing | Zinc die-casting |

#### Mechanical data | Mounting data

|                 |                |
|-----------------|----------------|
| Mounting method | Schraubgewinde |
| Height          | 145 mm         |
| Width           | 55 mm          |
| Depth           | 21 mm          |

#### Environmental characteristics | Climatic

|                            |        |
|----------------------------|--------|
| Operating temperature min. | -20 °C |
| Operating temperature max. | 60 °C  |

#### Conformity

|                  |            |
|------------------|------------|
| Product standard | EN 61131-2 |
|------------------|------------|

#### Installation | Cable

|                      |     |
|----------------------|-----|
| Cable identification | 403 |
|----------------------|-----|

|   |   |
|---|---|
| Printing color of wire insulation                 | white (isolation blue), white (isolation brown)   |
| Jacket Color                                      | gray  |
| Type of Certificate                               | cURus   |
| Amount stranding                                  | 1   |
| Stranding   | 5 wires around Core filler twisted  |
| Stranding factor min.                             | 70 mm   |
| Stranding factor max.                             | 70 mm   |
| Amount stranding (type 2)                         | 1   |
| Stranding (type 2)                                | 16 wires counter-rotating twisted   |
| Stranding factor min. (type 2)                    | 105 mm  |
| Stranding factor max. (type 2)                    | 105 mm  |
| Banding   | Fleece  |
| Filler  | yes   |
| wire arrangement                                  | (gray-pink, violet, brown-gray, black, gray-white, red, brown-yellow, pink, yellow-white, gray, brown-green, yellow, green-white, green, red-blue, white), brown 1, blue 2, brown 2, green-yellow, blue 1 |
| Cable weight                                      | 253 g/m   |
| Material jacket                                   | PUR   |
| Shore hardness jacket                             | 85 ± 5 Shore A  |
| Freedom from ingredients (jacket)                 | lead-free, cadmium-free, CFC-free, halogen-free, silicone-free, LABS-free   |
| Outer-diameter (jacket)                           | 11,5 mm   |
| Tolerance outer diameter (sheath)                 | ± 5 %   |
| Material wire insulation                          | TPE   |
| Amount wires                                      | 5   |
| Outer diameter insulation                         | 1,8 mm  |
| Outer diameter tolerance core insulation          | ± 5 %   |
| Shore hardness wire insulation                    | 55 ± 5 Shore D  |
| Ingredient freeness wire insulation               | lead-free, CFC-free, halogen-free, silicone-free, LABS-free   |
| Printing color of wire insulation                 | white (isolation blue), white (isolation brown)   |
| Amount strands (wire)                             | 96  |
| Diameter of single wires                          | 0,1 mm  |
| Conductor crosssection (wire)                     | 0,75 mm <sup>2</sup>  |
| Traversing distance (C-track)                     | 1,8 m @ 25 °C   |
| Material conductor wire                           | Stranded copper wire, bare  |
| Conductor type (wire)                             | strand class 6  |
| Material wire insulation (Data)                   | TPE   |
| Outer diameter wire insulation (Data)             | 1,4 mm  |
| Tolerance outer diameter wire insulation (data)   | ± 5 %   |
| Shore hardness wire insulation (Data)             | 55 ± 5 Shore D  |
| Ingredient freeness wire insulation (Data)        | lead-free, CFC-free, halogen-free, silicone-free, LABS-free   |
| Amount wires (Data)                               | 16  |
| Amount strands wire (Data)                        | 42  |
| Diameter of single wires (Data)                   | 0,1 mm  |
| Conductor crosssection wire (Data)                | 0,34 mm <sup>2</sup>  |
| Material conductor wire (Data)                    | Stranded copper wire, bare  |
| Wire conductor type (Data)                        | strand class 6  |
| Max. rated voltage (conductor - conductor)        | 500 V   |
| Max. rated voltage (conductor - ground)           | 300 V   |
| Current load capacity (standard)                  | to DIN VDE 0298-4   |
| Current load capacity min. wire                   | 9 A   |
| Current load capacity min. Wire (Data)            | 4 A   |
| Electrical resistance line constant wire          | 26 Ω/km @ 20 °C   |
| Electrical resistance coating wire (Data)         | 57 Ω/km @ 20 °C   |
| AC withstand voltage (wire - wire)                | 2 kV @ 60 s   |
| Power frequency withstand voltage (wire - jacket) | 2 kV @ 60 s   |

|                                      |  |
|--------------------------------------|--|
| Min. operating temperature (static)  | -40 °C   |
| Max. operating temperature (fixed)   | 90 °C  |
| Operating temperature min. (dynamic) | -25 °C   |
| Operating temperature max. (dynamic) | 80 °C  |
| Flame resistance                     | UL 1581 § 1100 FT2   IEC 60332-2-2   UL 1581 § 1090  |
| chemical resistance                  | Good, application-related testing                    |
| Gasoline resistance                  | Good, application-related testing                    |
| Oil resistance                       | Good, application-related testing   DIN EN 60811-404 |
| Bending radius (installation)        | x Outer diameter                                     |
| Bending radius (fixed)               | 5 x Outer diameter                                   |
| Bending radius (dynamic)             | 10 x Outer diameter                                  |
| Travel speed (C-track)               | 5 Mio. @ 25 °C                                       |

#### Connection type 2

|                          |                |
|--------------------------|----------------|
| Family construction form | free cable end |
| No. of poles             | 21             |
| Family construction form | M12            |
| Gender                   | female         |
| Color contact carrier    | black          |
| Coding                   | A              |
| No. of poles             | 5              |
| PIN 1                    | +              |
| PIN 2                    | NC S 2         |
| PIN 3                    | -              |
| PIN 4                    | NO S 1         |
| PIN 5                    | PE             |