

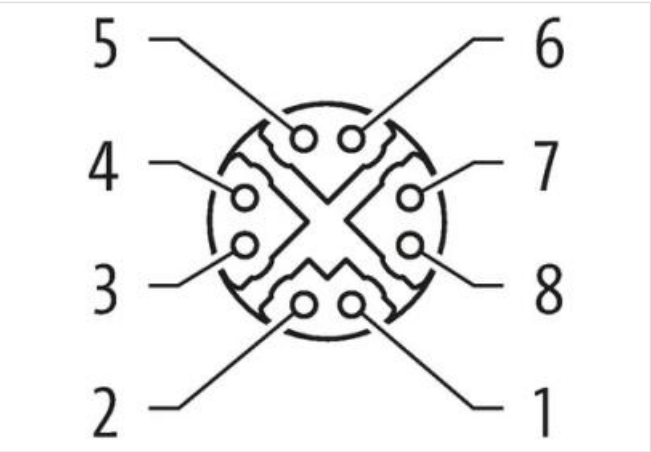
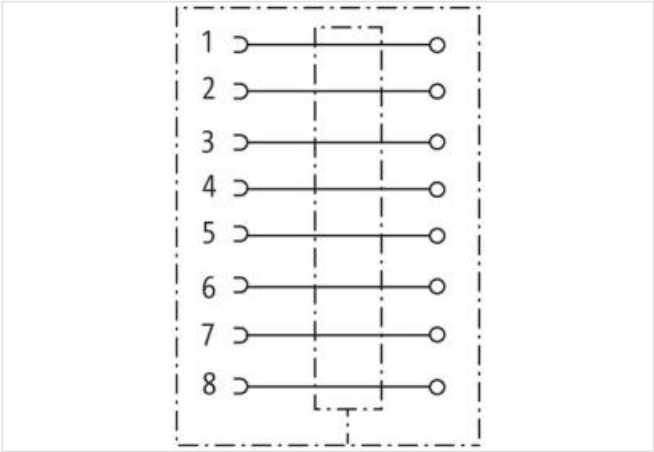
M12 female recept. 0° X-cod. rear

8-pol., PCB Pin, shielded

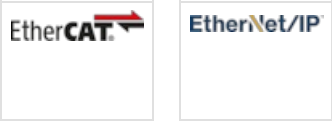
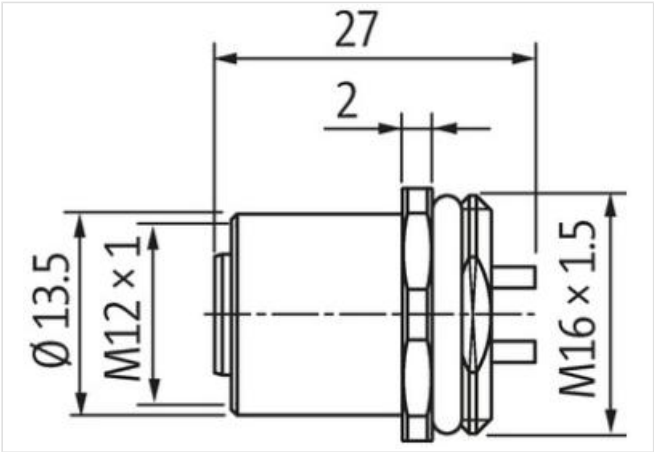
Ethernet CAT6A  
Flange female  
M12, 8-pole  
X-coded  
shielded  
Solder connection  
Rear mounting

Link to Product

Illustration



Product may differ from Image



|                                     |      |
|-------------------------------------|------|
| Side 1                              |      |
| Family construction form            | M12  |
| Coding                              | X    |
| Degree of protection (EN IEC 60529) | IP67 |

| Commercial data                          |   |
|--|---|
| ECLASS-6.0                               | 27279220  |
| ECLASS-7.0                               | 27440103  |
| ECLASS-8.0                               | 27440103  |
| ECLASS-9.0                               | 27440103  |
| ECLASS-10.1                              | 27440109  |
| ECLASS-11.1                              | 27440109  |
| ECLASS-12.0                              | 27440109  |
| ETIM-5.0                                 | EC002635  |
| customs tariff number                    | 85366990  |
| GTIN                                     | 4048879504126   |
| Packaging unit                           | 1   |
| Electrical data   Supply                 |   |
| Operating voltage AC max.                | 50 V  |
| Operating voltage DC max.                | 60 V  |
| Current operating per contact max.       | 0,5 A   |
| Industrial communication                 |   |
| Transfer parameters                      | CAT6, Class EA (ISO/IEC 11801:2002), (EN 50173-1)   |
| Data transmission rate max.              | 10000 MBit/s  |
| Installation   Connection                |   |
| Tightening torque                        | 0,6 Nm  |
| Mounting set                             | M12 x 1   |
| Device protection   Electrical           |   |
| Additional condition protection degree   | inserted, screwed   |
| Mechanical data   Material data          |   |
| Coating housing                          | nickel plated   |
| Material housing                         | Brass   |
| Mechanical data   Mounting data          |   |
| Mounting method                          | inserted, screwed, Shaking protection   |
| Environmental characteristics   Climatic |   |
| Operating temperature min.               | -40 °C  |
| Operating temperature max.               | 85 °C   |
| Important installation notes             |   |
| Note on strain relief                    | Protect the connectors by suitable measures from mechanical loads, e.g. by the usage of cable ties.   |
| Note on bending radius                   | <b>Attention:</b> Observe the permissible bending radii when laying cables, as the IP protection class can be endangered by excessive bending forces. |
| Conformity                               |   |
| Product standard                         | DIN EN 61076-2-114 (M8)   |