

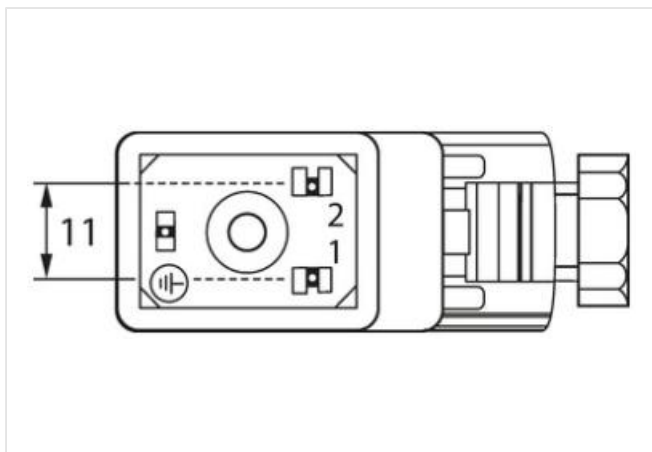
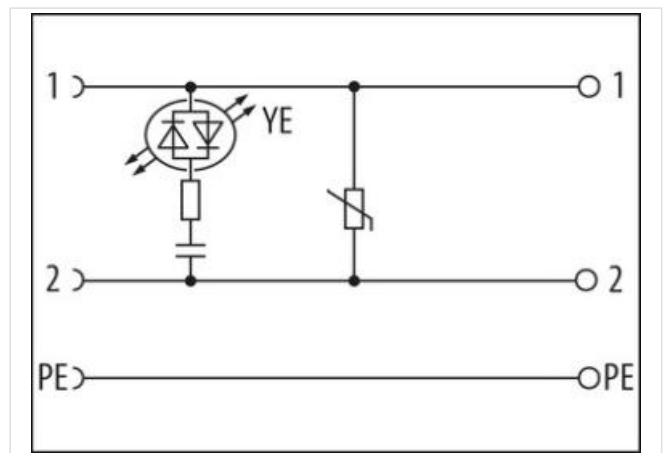
SVS VALVE PLUG FORM BI 11MM FIELD-WIREABLE

230V LED+VDR M16x1.5

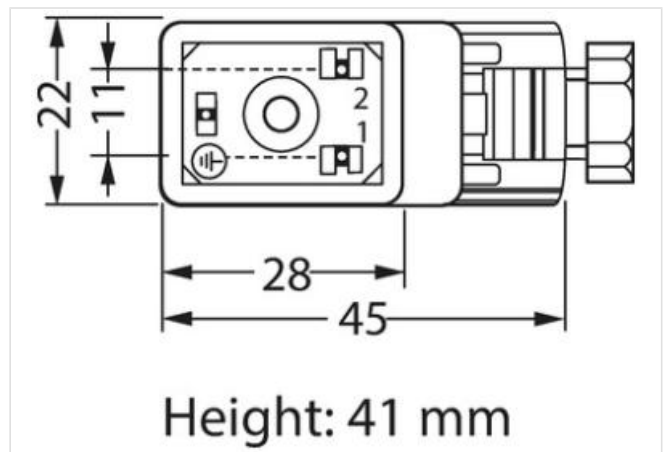
 Form BI (11 mm)
 230 V AC/DC $\pm 10\%$
 LED and RC
 metric

Plastic housings with good resistance against chemicals and oils.

The resistance to aggressive media should be individually tested for your application. Further details on request.

[Link to Product](#)
Illustration


Product may differ from Image


Side 1

Degree of protection (EN IEC 60529)

IP65

Commercial data

ECLASS-6.0

27279221

ECLASS-7.0	27440104
ECLASS-8.0	27440104
ECLASS-9.0	27440102
ECLASS-10.1	27440105
ECLASS-11.1	27440105
ECLASS-12.0	27440105
ETIM-5.0	EC002062
customs tariff number	85366990
GTIN	4048879187077
Packaging unit	1

Electrical data

Drop-out delay time max.	15 ms
Holding power max.	50 W

Electrical data | Supply

Operating voltage AC	230 V
Operating voltage AC min.	207 V
Operating voltage AC max.	253 V
Operating voltage DC	230 V
Operating voltage DC min.	207 V
Operating voltage DC max.	253 V
Cut-off peak voltage max.	450 V
Current operating per contact max.	1 A
Current consumption max.	12 mA

Diagnostics

Status indication LED	yellow
-----------------------	--------

Installation

Connection cross section max.	1,5 mm ²
-------------------------------	---------------------

Installation | Connection

Tightening torque	0,4 Nm
Mounting set	M16 x 1.5

Device protection | Electrical

Additional condition protection degree	inserted, locked, with screw connection
--	---

Mechanical data | Mounting data

fastening screw	M3
Clamping range min.	5 mm
Clamping range max.	10 mm

Environmental characteristics | Climatic

Operating temperature min.	-20 °C
Operating temperature max.	60 °C

Important installation notes

Note on strain relief	Protect the connectors by suitable measures from mechanical loads, e.g. by the usage of cable ties.
Note on bending radius	Attention: Observe the permissible bending radii when laying cables, as the IP protection class can be endangered by excessive bending forces.