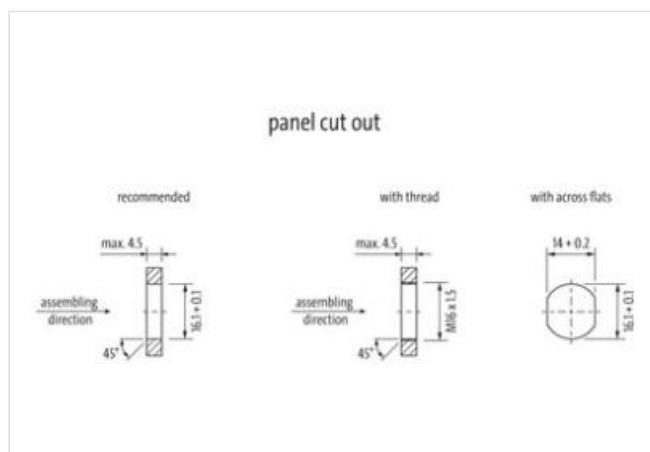
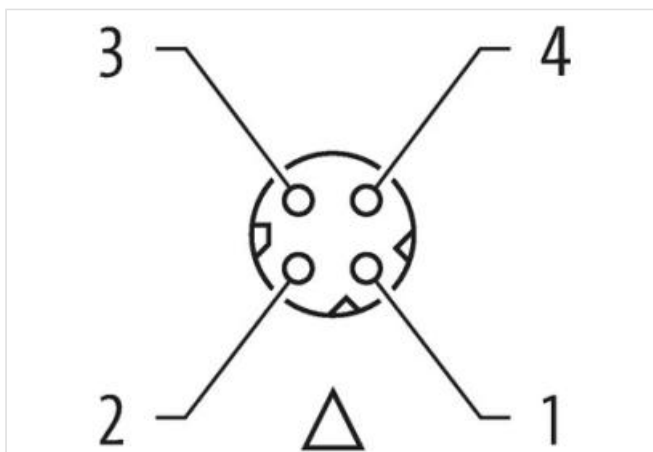
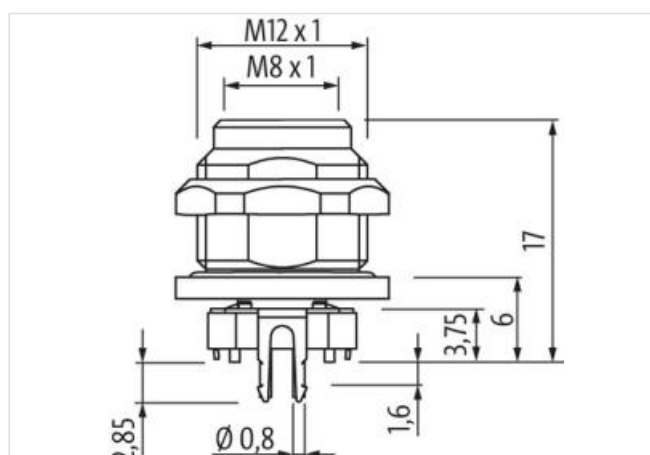
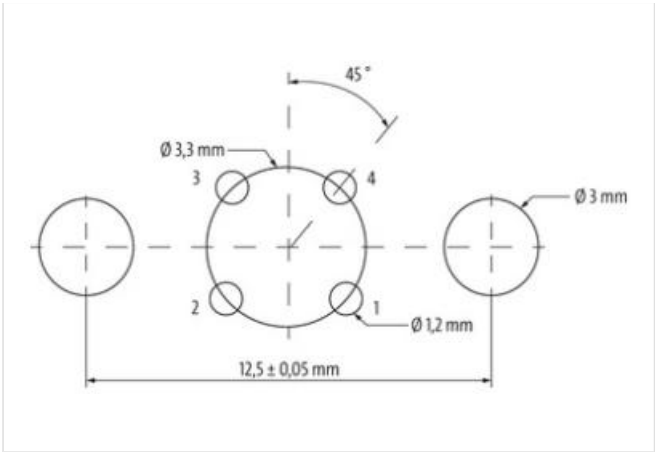


M8 female receptable 0° D-cod. rear

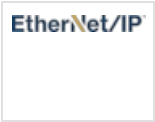
4-pol., PCB pin, shielded

PCB connectors
 Female straight
 M8, 4-pole
 D-coded
 Shielded
 THT-solder connection
 Rear mounting

[Link to Product](#)**Illustration**



Product may differ from Image



Side 1	
Coating contact	nickel plated
Family construction form	M8
Coding	D
Material contact	Brass
No. of poles	4
Width across flats	SW14
Commercial data	
ECLASS-6.0	27279218
ECLASS-6.1	27279220
ECLASS-7.0	27440103
ECLASS-8.0	27440103
ECLASS-9.0	27440109
ECLASS-10.1	27440109
ECLASS-11.1	27440109
ECLASS-12.0	27440109
ETIM-5.0	EC001855
customs tariff number	85366930
GTIN	4048879906845
Packaging unit	10
Electrical data Supply	
Operating voltage AC	50 V
Operating voltage DC	60 V
Current operating per contact max.	4 A
Industrial communication	
Transfer parameters	CAT5e, Class D (ISO/IEC 11801)
Installation Connection	
Connection information	THT-solder connection
Tightening torque	0,6 Nm
Mounting set	M12 x 1
Mating cycles min.	100
Device protection	

Shielded yes

Device protection | Electrical

Degree of protection (EN IEC 60529)	IP67
Additional condition protection degree	inserted, screwed
Pollution Degree	3/2
Insulation resistance min.	100 MΩ

Mechanical data | Material data

Coating housing	nickel plated
Material gasket	FPM
Material housing	Copper alloy
Material contact carrier	PA6

Mechanical data | Mounting data

Mounting method	inserted, screwed, Shaking protection
-----------------	---------------------------------------

Environmental characteristics | Climatic

Operating temperature min.	-25 °C
Operating temperature max.	90 °C

Important installation notes

Note on strain relief	Protect the connectors by suitable measures from mechanical loads, e.g. by the usage of cable ties.
Note on bending radius	Attention: Observe the permissible bending radii when laying cables, as the IP protection class can be endangered by excessive bending forces.